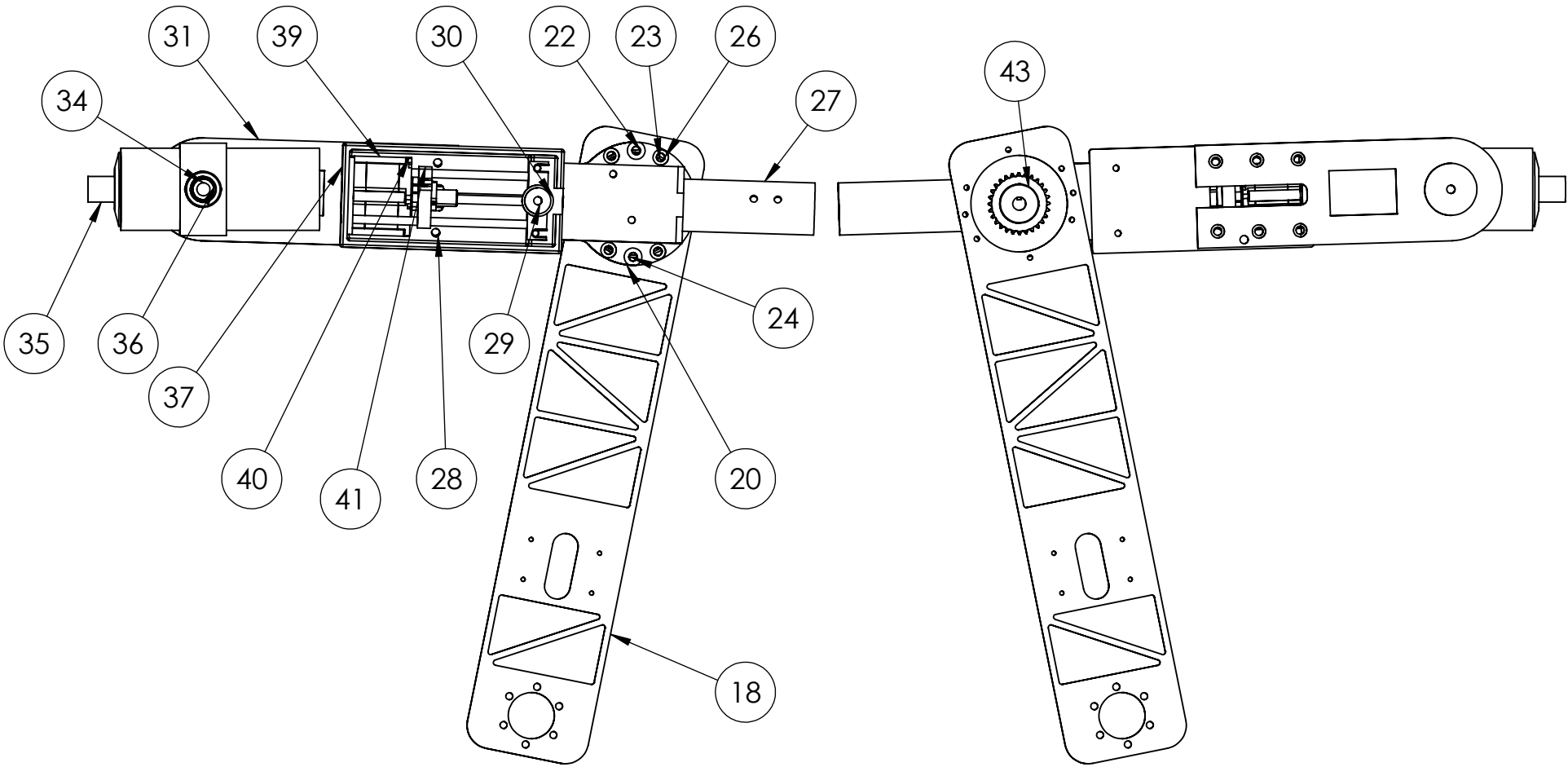


ITEM NO.	PART NUMBER	DESCRIPTION	QTY.
18	J2_Arm		1
19	J3 Motor Mount(Nema23)		1
20	J3 Bearing Cup		1
21	60715K31	One-Piece Steel Thrust Ball Bearing	1
22	J3 Spindle		1
23	5909K955	Needle-Roller Thrust Bearing	1
24	5909K975	1/32" Thick Washer for 3-1/4" Shaft Diameter Needle-Roller Thrust Bearing	1
25	J3 Key Shaft		1
26	J4 Turret Housing		1
27	J4 Main Shaft		1
28	J5 Housing Box		1
29	J5 Idler Tension BK		1
30	J5 Bearing Post		1
31	J6 Main Bearing Arm BK		1
32	J6 Bearing Cap BK		1
33	J6 Taper Roller Bearing Filler 5709K431		1
34	J6 Housing Piece BK		1
35	Spindle		1
36	1277N47	Corrosion-Resistant Timing Belt Pulley	1
37	J5 Guide Rod		2
39	J4 motor support		1
40	J5_Nema23		1
41	J5 Guide Piece BK		1
43	2737T212	Roller Chain Sprocket	1



**PROPRIETARY AND CONFIDENTIAL**  
THE INFORMATION CONTAINED IN THIS DRAWING IS THE SOLE PROPERTY OF <INSERT COMPANY NAME HERE>. ANY REPRODUCTION IN PART OR AS A WHOLE WITHOUT THE WRITTEN PERMISSION OF <INSERT COMPANY NAME HERE> IS PROHIBITED.

		UNLESS OTHERWISE SPECIFIED:		NAME	DATE	
		DIMENSIONS ARE IN INCHES	DRAWN			
		TOLERANCES:	CHECKED			TITLE:
		FRACTIONAL ±	ENG APPR.			
		ANGULAR: MACH ± BEND ±	MFG APPR.			
		TWO PLACE DECIMAL ±	Q.A.			
		THREE PLACE DECIMAL ±	COMMENTS:			
		INTERPRET GEOMETRIC TOLERANCING PER:				
		MATERIAL				SIZE DWG. NO. REV
NEXT ASSY	USED ON	FINISH				<b>B7 Full Assembly</b>
APPLICATION		DO NOT SCALE DRAWING				SCALE: 1:10 WEIGHT: SHEET 1 OF 1